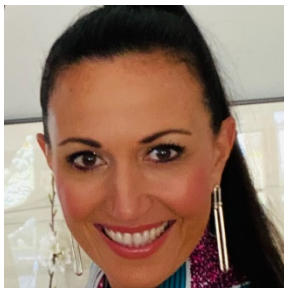




Bethany Flood

Executive Director, Foundation for Health Equity
(formerly Green Tree Community Health Foundation)

Bethany is passionate about supporting individuals as they pursue their ideal life and creating safe equitable spaces for all. To this end, she worked internationally for almost ten years before attaining both a master's in social work and a master's in nonprofit management from Case Western Reserve University in 2011. Since then, she has served several Philadelphia based nonprofits primarily in the roles of fundraiser and consultant. In 2013 Bethany transitioned to the grantmaking side of the desk at Green Tree Community Health Foundation (now Foundation for Health Equity), building the grantmaking program at the foundation into a community focused, service minded process. As the Executive Director (2018), Bethany has led the foundation through the first full strategic planning process in the history of the organization, through the name change and re-branding, and into their now established trust-based, community informed grantmaking and advocacy work.



Gwyneth Gaul

Associate Vice President, Strategic Partnerships & Community Impact at Comcast NBCUniversal.

Gwyneth Gaul is Associate Vice President, Strategic Partnerships & Community Impact at Comcast NBCUniversal. In this role, Gwyneth builds and manages Comcast's community investment portfolio, sourcing and cultivating relationships with national and regional partners to advance the company's primary philanthropic objective of digital equity. She works closely with other senior leaders on Comcast's equity initiatives, including its \$100 million commitment to social justice and equality and the \$1B commitment over 10 years to digital equity.

Gwyneth has more than 15 years of experience in social impact and philanthropy. Prior to joining Comcast NBCUniversal in 2019, Gwyneth was the Director of Partnerships at Benevity. At Benevity, she helped leading Bay Area technology companies develop and execute corporate responsibility strategies and employee engagement initiatives. Gwyneth has also served as the Director of Development at the world's largest community foundation, Silicon Valley Community Foundation (SVCF). In her role at SVCF, she was responsible for supporting strategies promoting SVCF's role as a center of philanthropy and leading philanthropic partner for individuals and corporations. Gwyneth also held positions at The Pittsburgh Foundation, one of the nations most established community foundations and the Grameen Foundation, an international foundation based in Washington DC supporting micro-finance programs around the world. In 2013 she received her Chartered Advisor in Philanthropy designation from the American College of Financial Services.

A Pittsburgh native, Gwyneth is a Mentor through Amachi Pittsburgh. She has been an on-air radio host for WYEP-FM and sought ways to connect communities in Pittsburgh's East End by co-founding Monday night Jazz at AVA in East Liberty. She is a former member of the Board of Directors for Shuman Juvenile

Detention Center and The Sprout Fund and was selected as one of Pittsburgh Magazine's 40 under 40. She is a graduate of Carnegie Mellon University where she played varsity soccer.



Dominique Goss

Executive Director, The M&T Charitable Foundation; Senior Vice President M&T Bank

Dominique is a compassionate, astute and progressive philanthropic leader. She has been responsible for aligning corporate giving goals to broader organizational strategic priorities. Her passion and commitment to equity and underserved communities of human diversity is demonstrated in her portfolio of work. She has pioneered efforts and championed financial giving to organizations that promote sound fiscal responsibility and innovation in the non-profit sector. She also brings a broad understanding of business principles which serves her well when collaborating with other business leaders to align shared values. Her commitment to improving the quality of life for M&T's customers, colleagues, and communities is evident through her passion and partnership.

Dominique, a native Philadelphian spent her freshman year at Howard University in Washington DC. She later transferred to Temple University where she received her Bachelor's degree and became more acutely aware of urban centers' socioeconomic issues. In college, she noticed poorer communities had fewer resources, like grocery stores, health centers, and quality schools. She now strives towards bridging the gap nationally for communities challenged with deep inequities.

She was honored by The Philadelphia Inquirer where she received the 2019 millennial philanthropist of the year award, as the next generation of leaders in philanthropy. Additionally, the Social Innovation's Journal honored her as a "2021 Social Impact investor"; acknowledging her sustained commitment to our most vulnerable communities. Most recently, she was named and invited to attend the Forbes "Queens of Culture: Legends of Business" event. An event that honored 40 women of color who are leading significant change in their respective fields.

Dominique dedicates her time with organizations impacting economic inequality & the racial wealth gap, youth empowerment, and arts & culture. She currently serves as board member for Philadelphia Mural Arts Advocates and co-chair of the Non-Profit Repositioning Fund. She's a 2019-2020 Connecting Leaders Fellow with the Association for Black Foundation Executives (ABFE).

When Dominique isn't trying to help change the world, she enjoys spending time with family, traveling with friends, and catching the newest shows on Netflix & Hulu. She's an avid dancer, shopper, and food connoisseur.



Peter Gonzales

President and CEO, The Welcoming Center and Trustee, The Merchants Fund

Peter has served as President and CEO of The Welcoming Center since 2010, actively promoting Philadelphia's economic growth through immigrant integration and inclusion.

Before coming to The Welcoming Center, he managed an immigration law practice in Pennsylvania and Delaware, served as Chief of Staff to the City Solicitor in Philadelphia, and worked as an educator, advocate, and economic developer in Philadelphia and abroad.

He is an Eisenhower Fellow and currently serves on the boards of Philadelphia Works, Inc., The Chamber of Commerce of Greater Philadelphia, Greenline Access Capital, and The Merchants Fund. He lives with his family in Mt. Airy and plays the mandolin in a couple of local bands.