

COVID-19 update

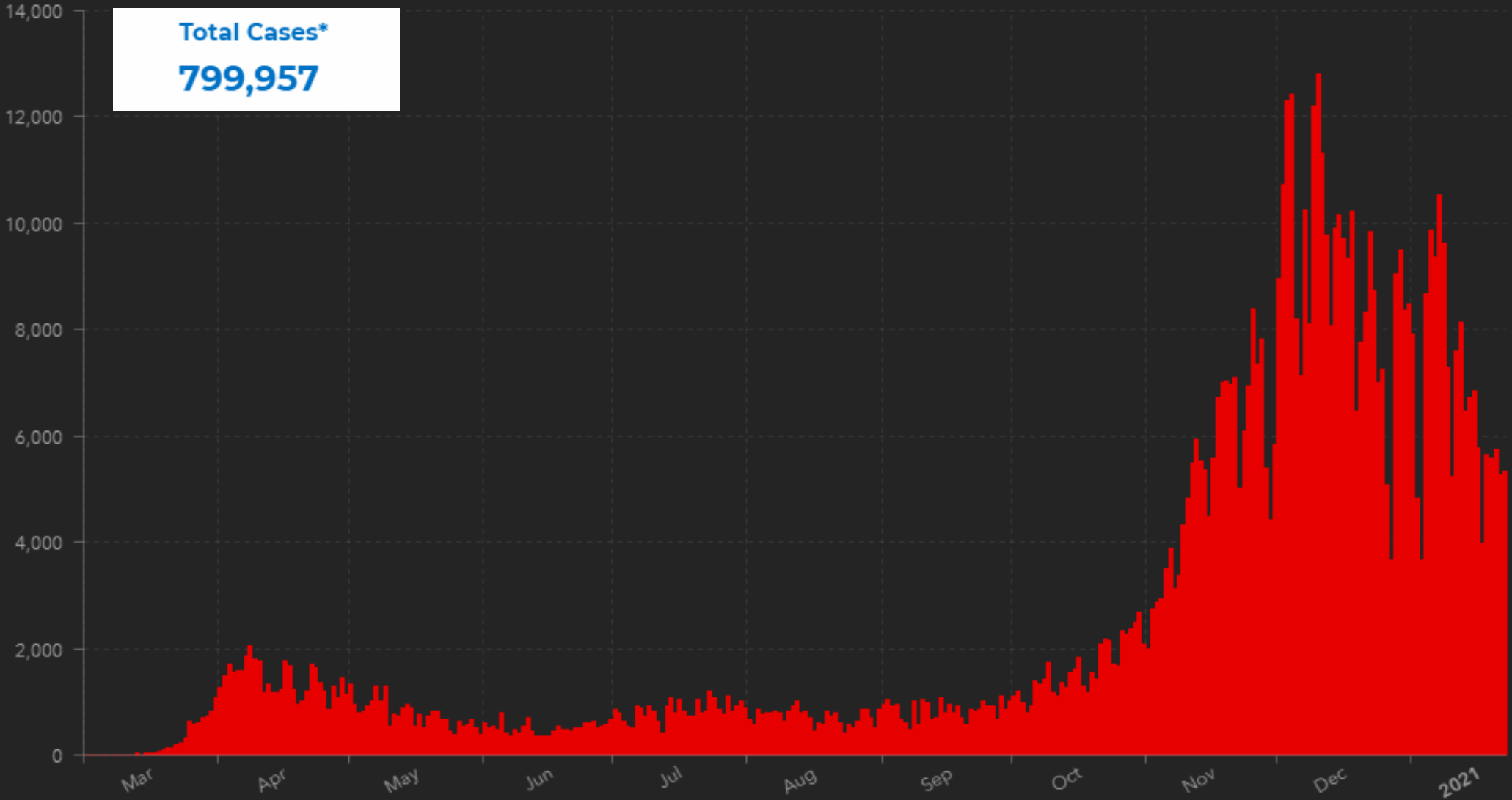
Dr. Douglas Jacobs

Chief Innovation Officer

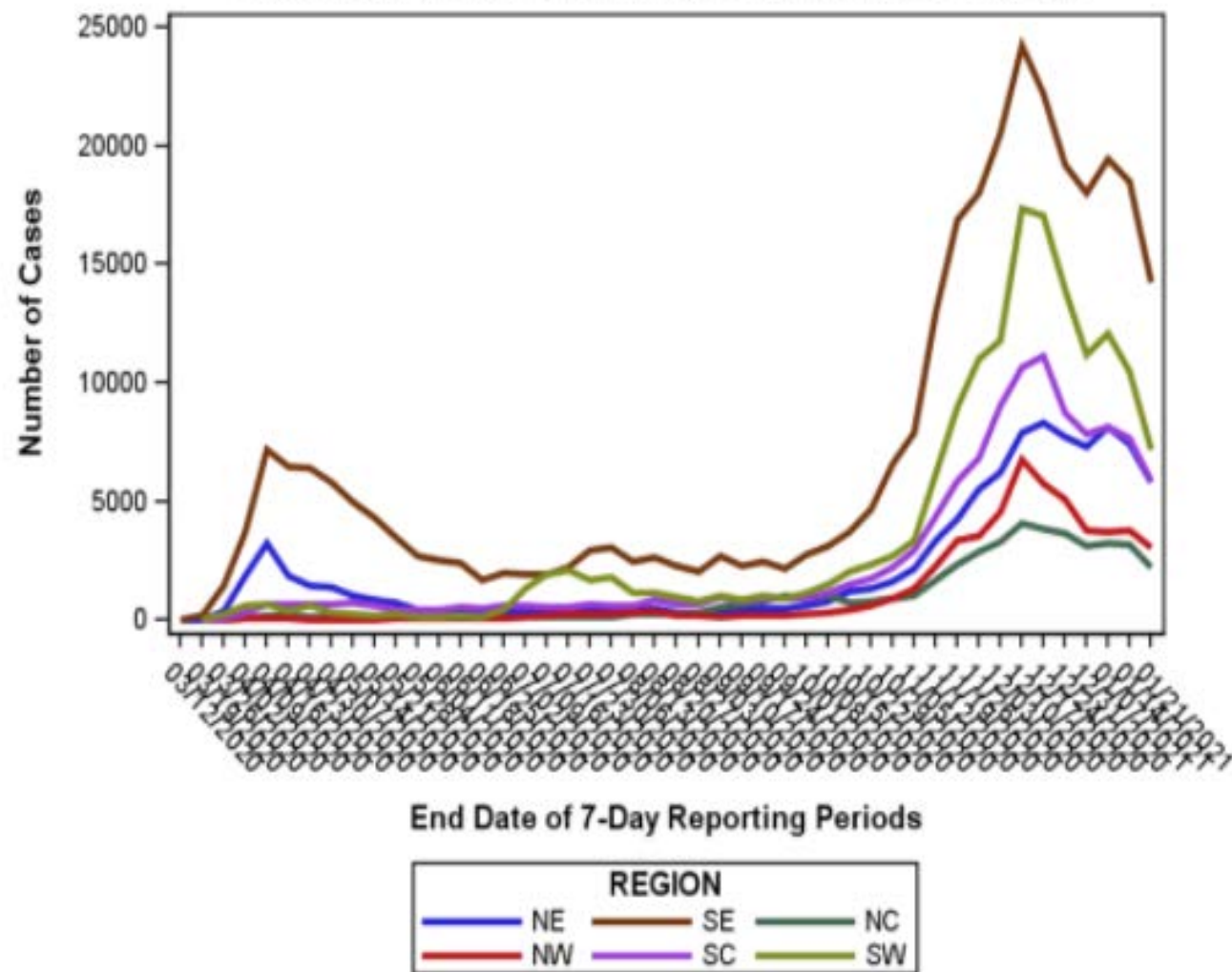
Pennsylvania Department of Human Services

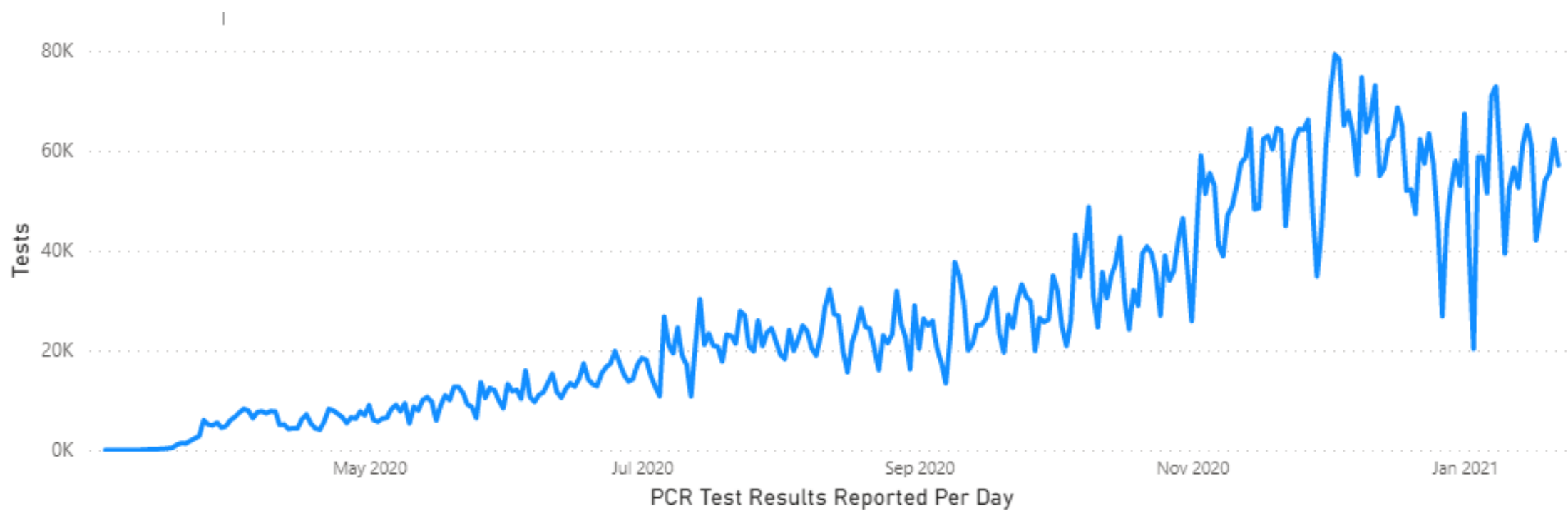
New Cases Per Day

Total Cases*
799,957



EPICURVE OF CASES BY REGION AND WEEK OF REPORT



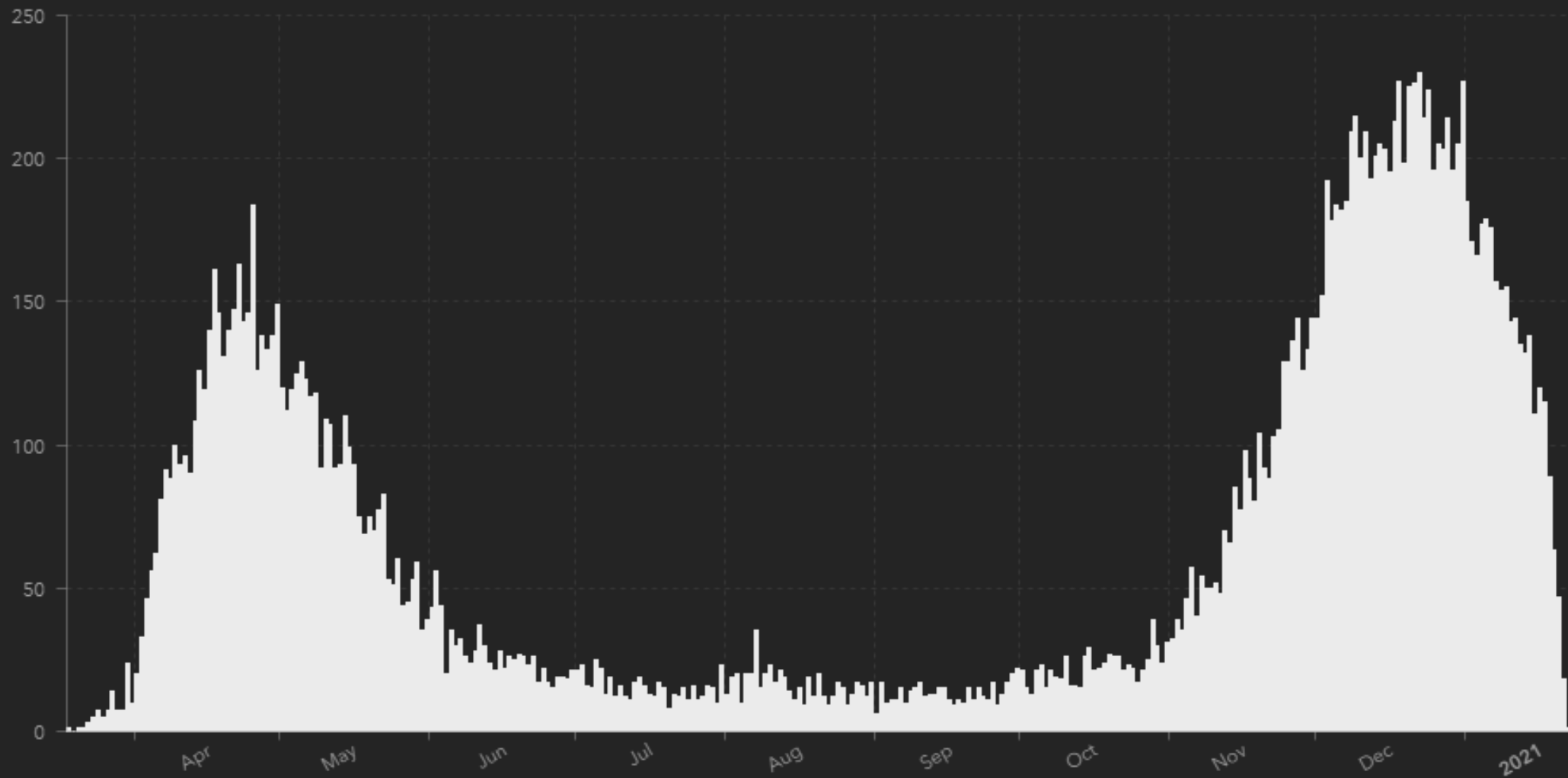


Pennsylvania COVID-19 Dashboard

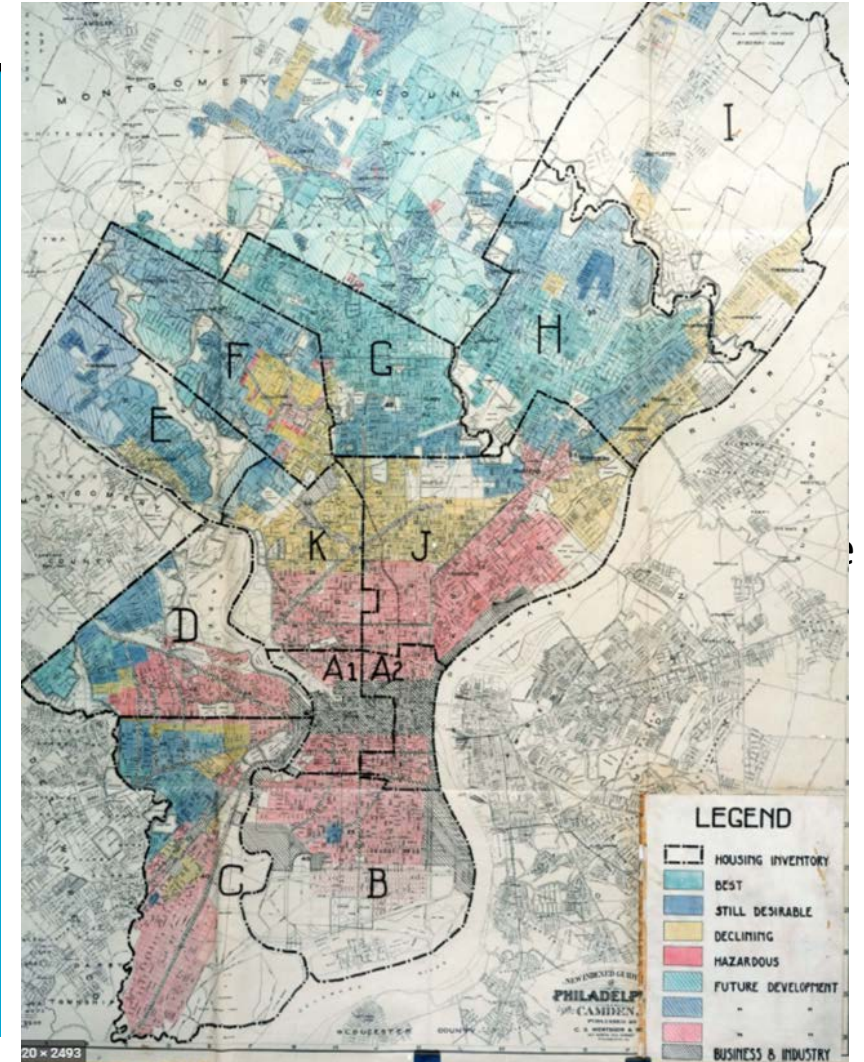
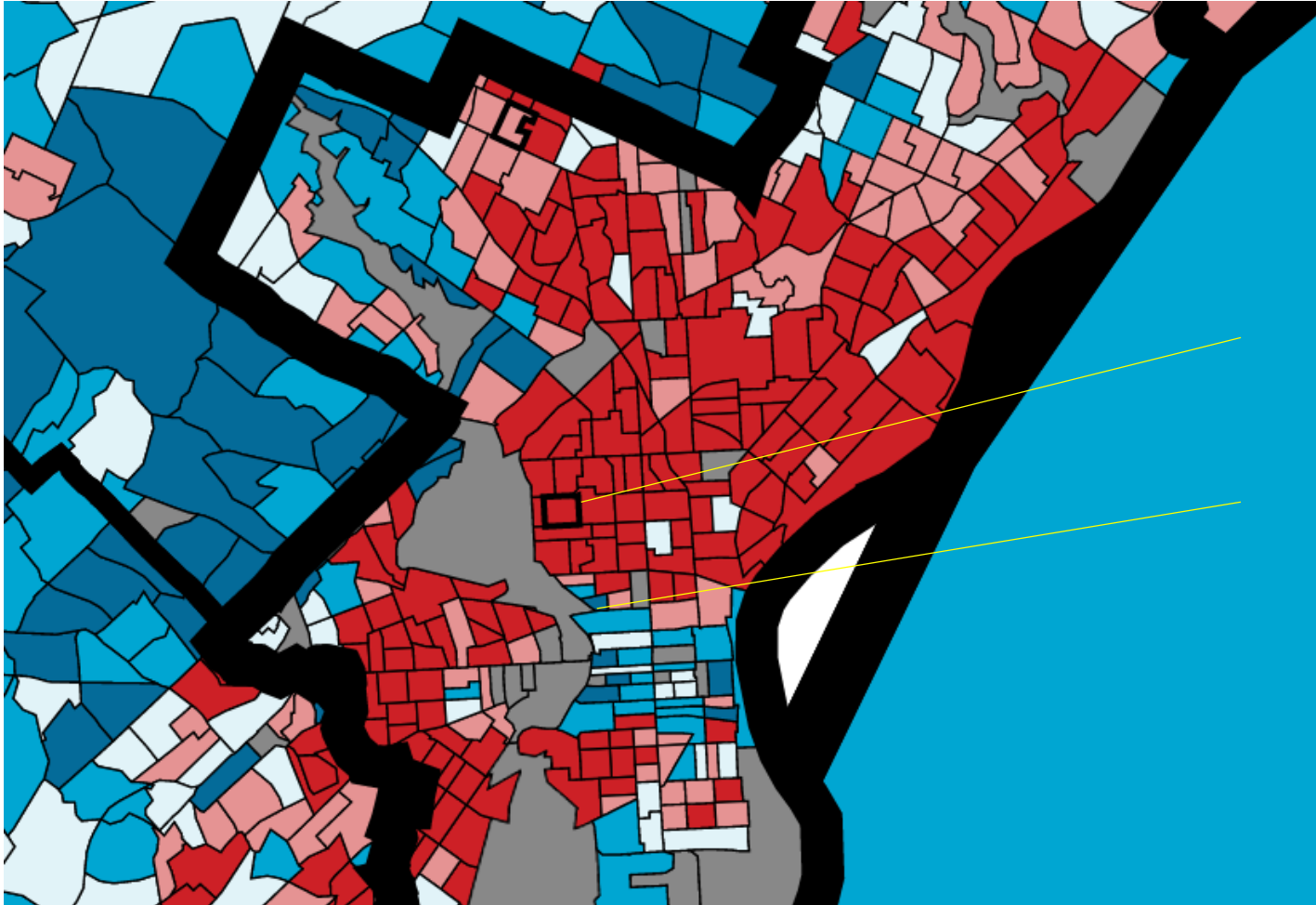
Choose a County from the dropdown Pennsylvania

20,609 deaths total

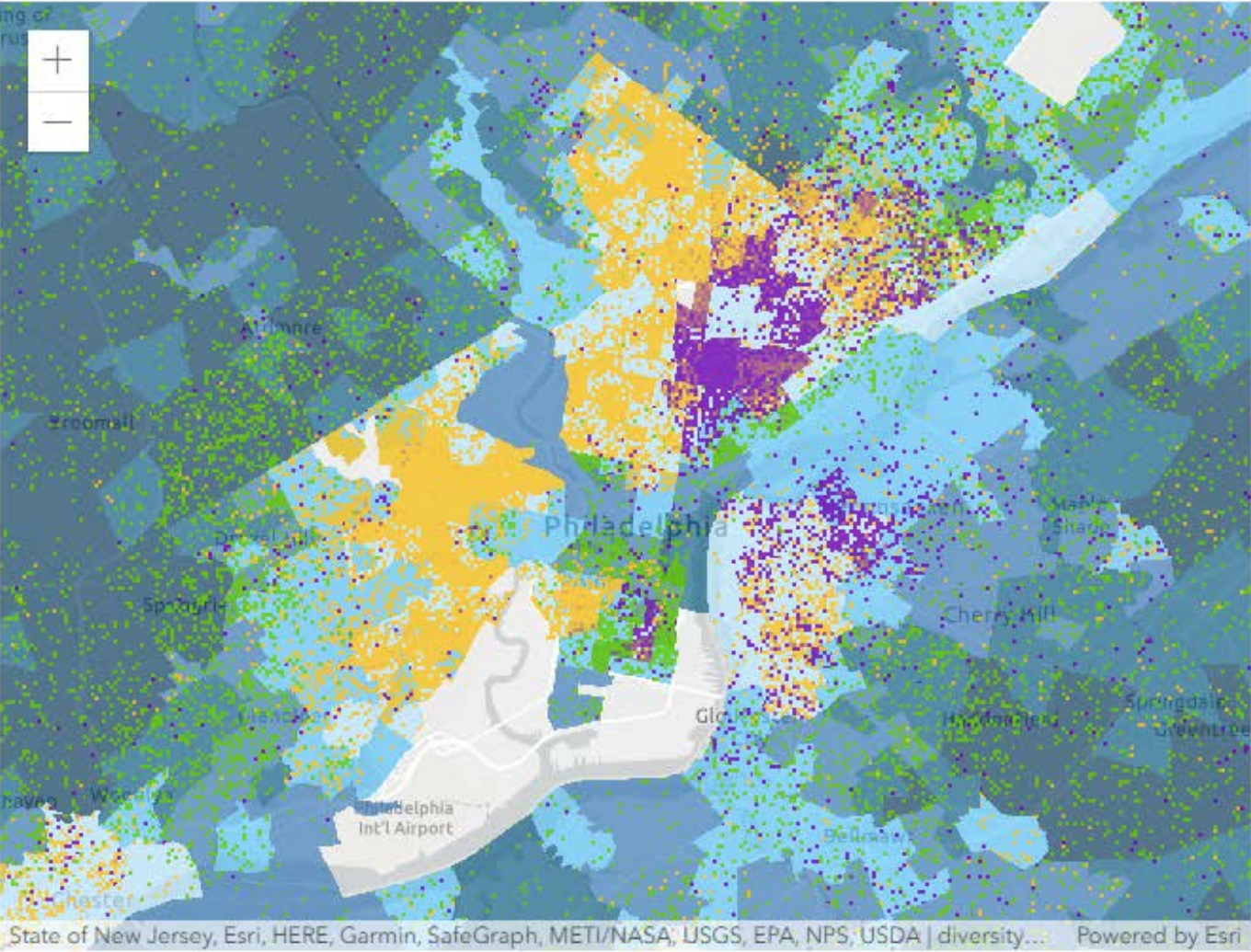
Deaths by Day



What got us here?



Childhood opportunity index



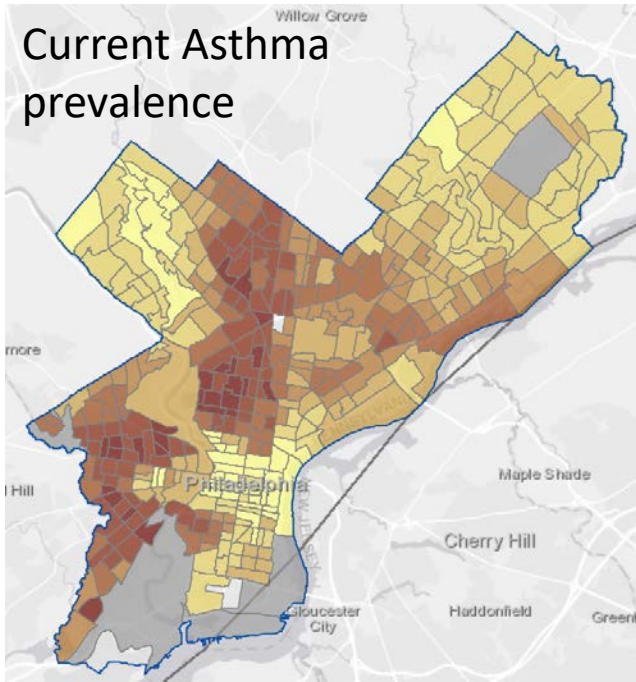
Percentage of children in the Philadelphia-Camden-Wilmington, PA-NJ-DE-MD metropolitan area at each neighborhood opportunity level, by race/ethnicity

White Hispanic Black

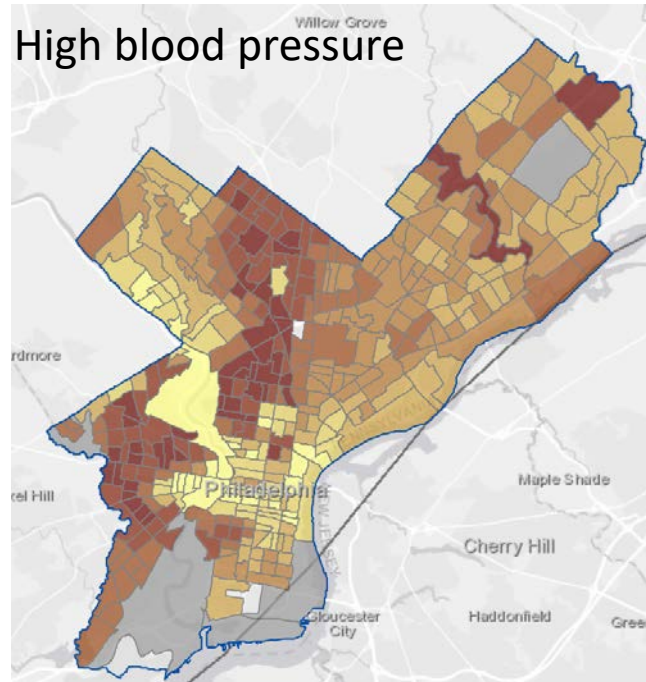
Neighborhood opportunity levels

Very low Low Moderate High Very high

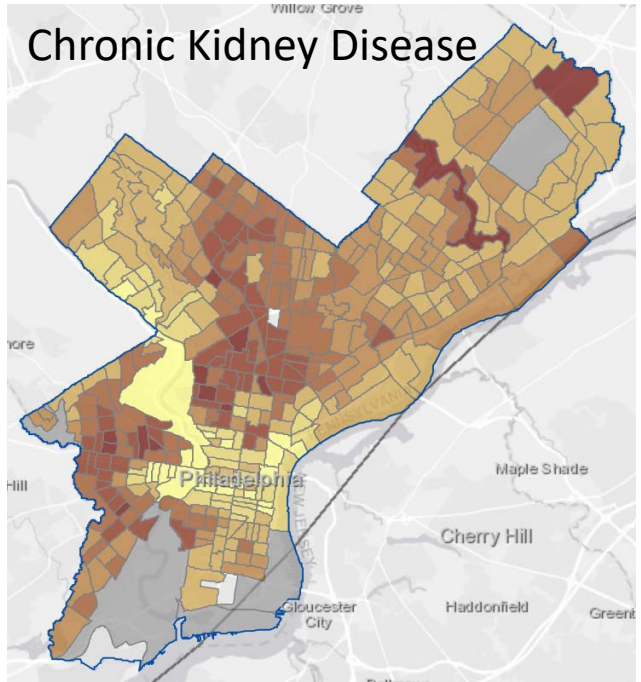
Current Asthma prevalence



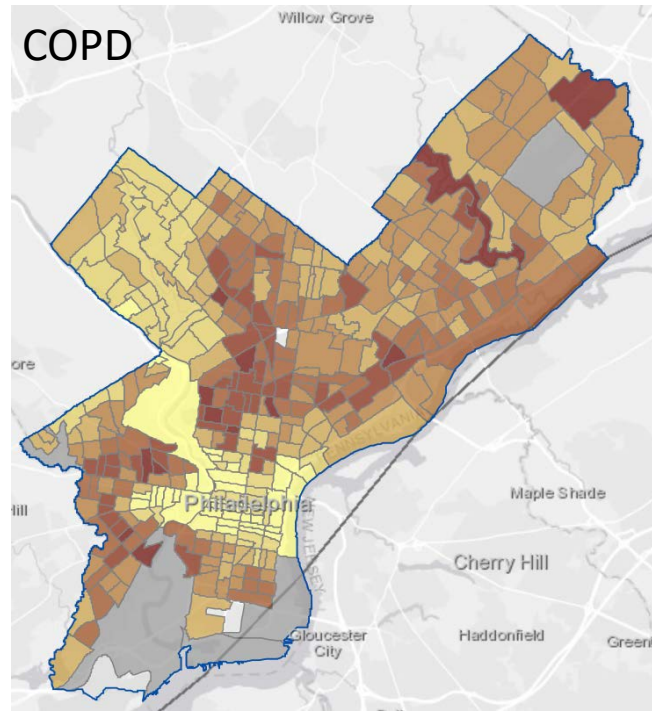
High blood pressure



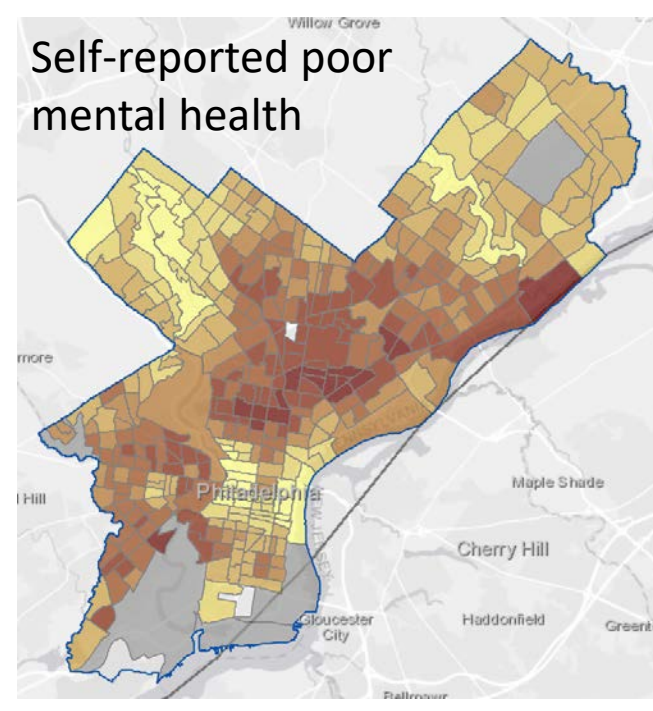
Chronic Kidney Disease



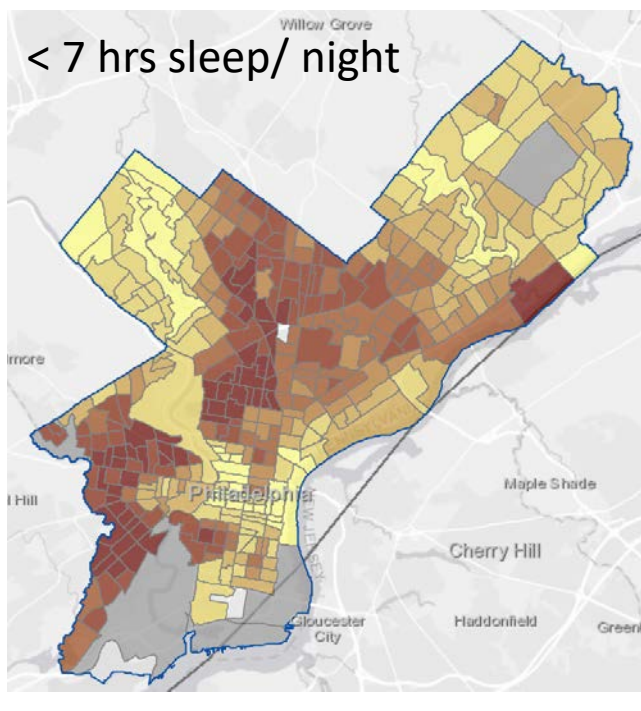
COPD



Self-reported poor mental health

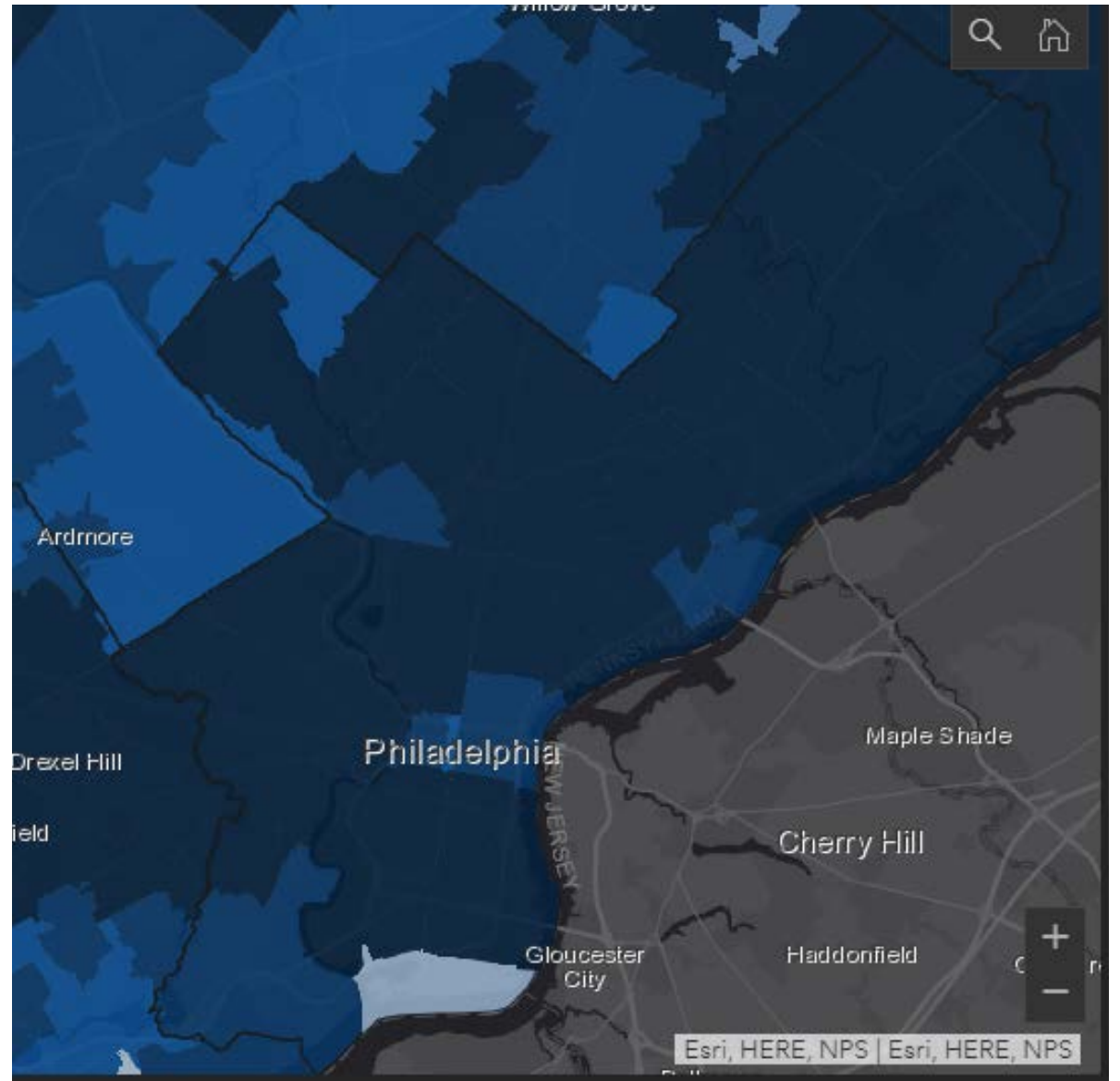
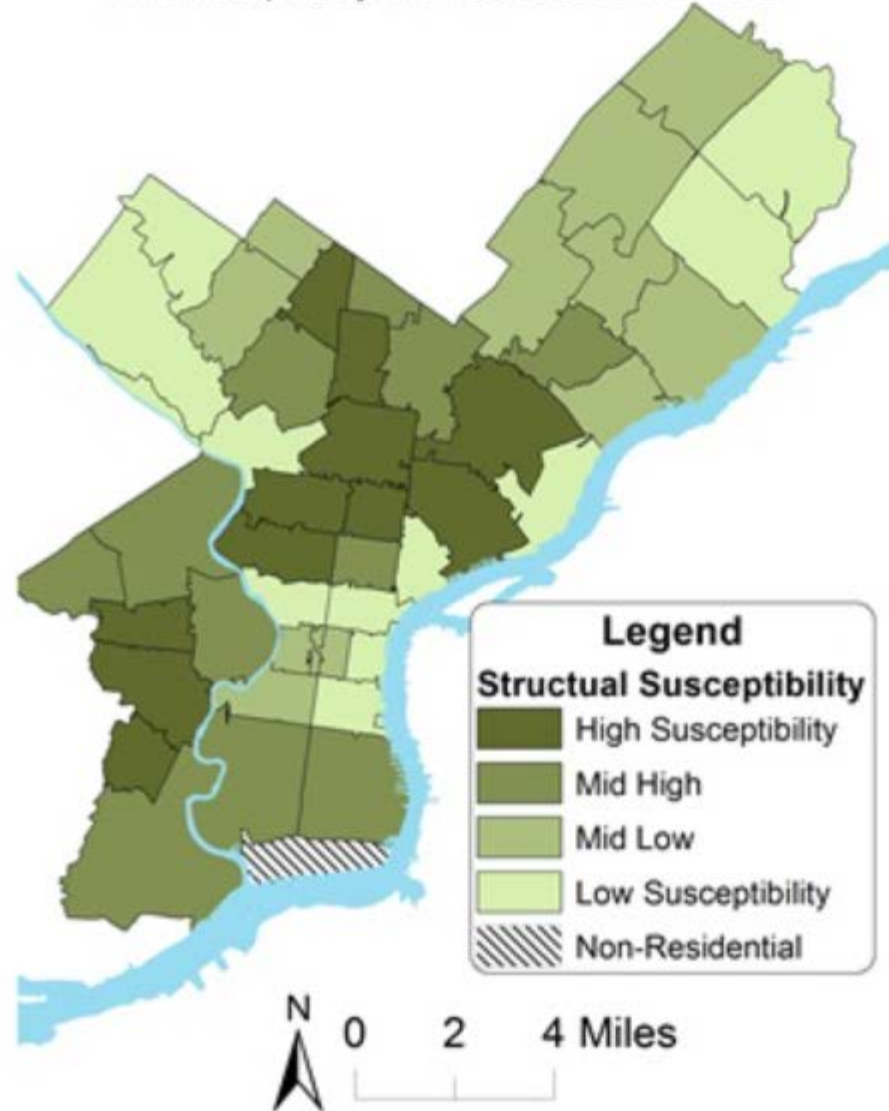


< 7 hrs sleep/ night



500 Cities
Project: Local
Data for Better
Health
https://nccd.cdc.gov/500_Cities/rdPage.aspx?rdReport=DPH_500_Cities.InteractiveMap&isCategories=HLTHOUT&isMeasures=ARTHRITIS&isStates=42&rdRnd=37964

Structural Susceptibility to COVID-19
in Philadelphia by ZIP Code, ACS 2014-2018



COVID-19 IN CONTEXT: RACISM, SEGREGATION, AND RACIAL INEQUITIES IN PHILADELPHIA



Table 1: COVID-19 Outcomes Overall and by Segregation in Philadelphia as of May 15, 2020

ZIP Code	ICE Rank	% NH Black	Structural Susceptibility	% Positive Tests	Cases per 10,000
5 Most Segregated ZIP Codes					
19150 (Most Segregated)	1	93.6	-1.31	30.2	159.6
19138	2	91.6	5.22	29.4	138.6
19132	3	90.6	8.39	30.1	153.4
19139	4	87.0	9.62	29.0	157.6
19151	5	87.1	1.04	31.4	147.4
Most Segregated, Overall		90.0	4.59	30.0	151.3
5 Least Segregated ZIP Codes					
19106	42	8.1	-6.78	11.7	43.6
19154	43	8.5	-8.57	29.0	101.0
19125	44	3.9	6.74	19.2	70.1
19127	45	9.4	-10.32	16.1	44.4
19137 (Least Segregated)	46	2.3	-6.22	15.0	44.8
Least Segregated, Overall		6.44	-5.03	18.2	74.3
Philadelphia		42.3	0.00	29.0	122.8

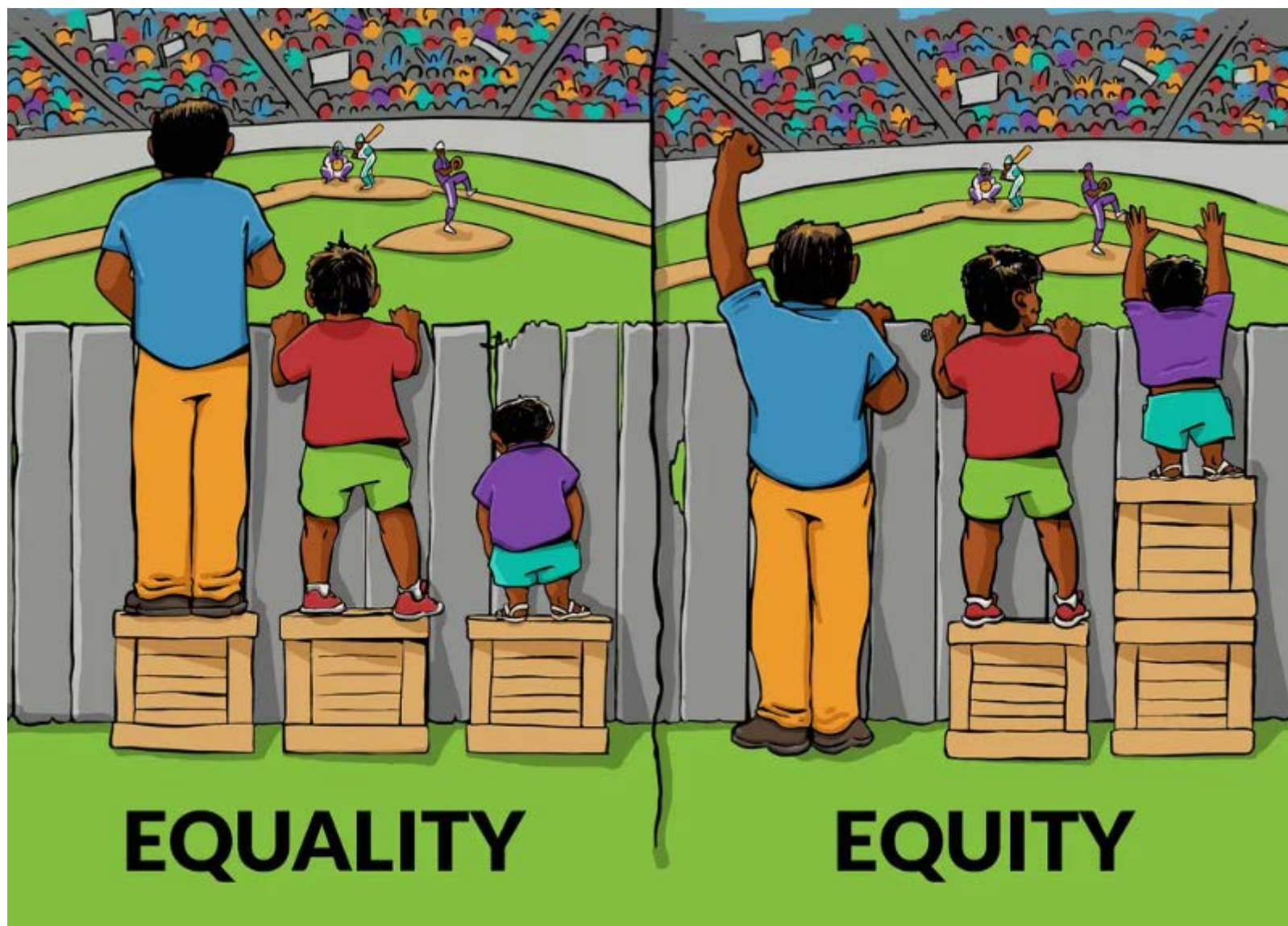
Note: Data for neighborhood indicators were retrieved from the 2014-2018 American Community Survey. Data on COVID-19 outcomes were retrieved from publicly available data on the PDPH website as of May 15, 2020.

Delaware County



79.9 years
67.0 years

12.9 years



Treating everyone the same will not reverse inequities that are often the result of generations of racist policies.

Vaccine distribution

- 413,450 persons have received one dose
- 106,541 have received two doses
- Approximately 520k vaccinated as of 1/23
- About 45% of vaccine distributed has been administered

Who is doing the vaccinating?

- Hospitals
- FQHCs
- Pharmacies
 - CVS and Walgreens– Federal Pharmacy Partnership for Long-Term Care
 - Rite Aid and Topco– Retail Pharmacy Partnership
 - Rite Aid– PA DHS-licensed facilities Partnership
- Mass Vaccination Clinics planned

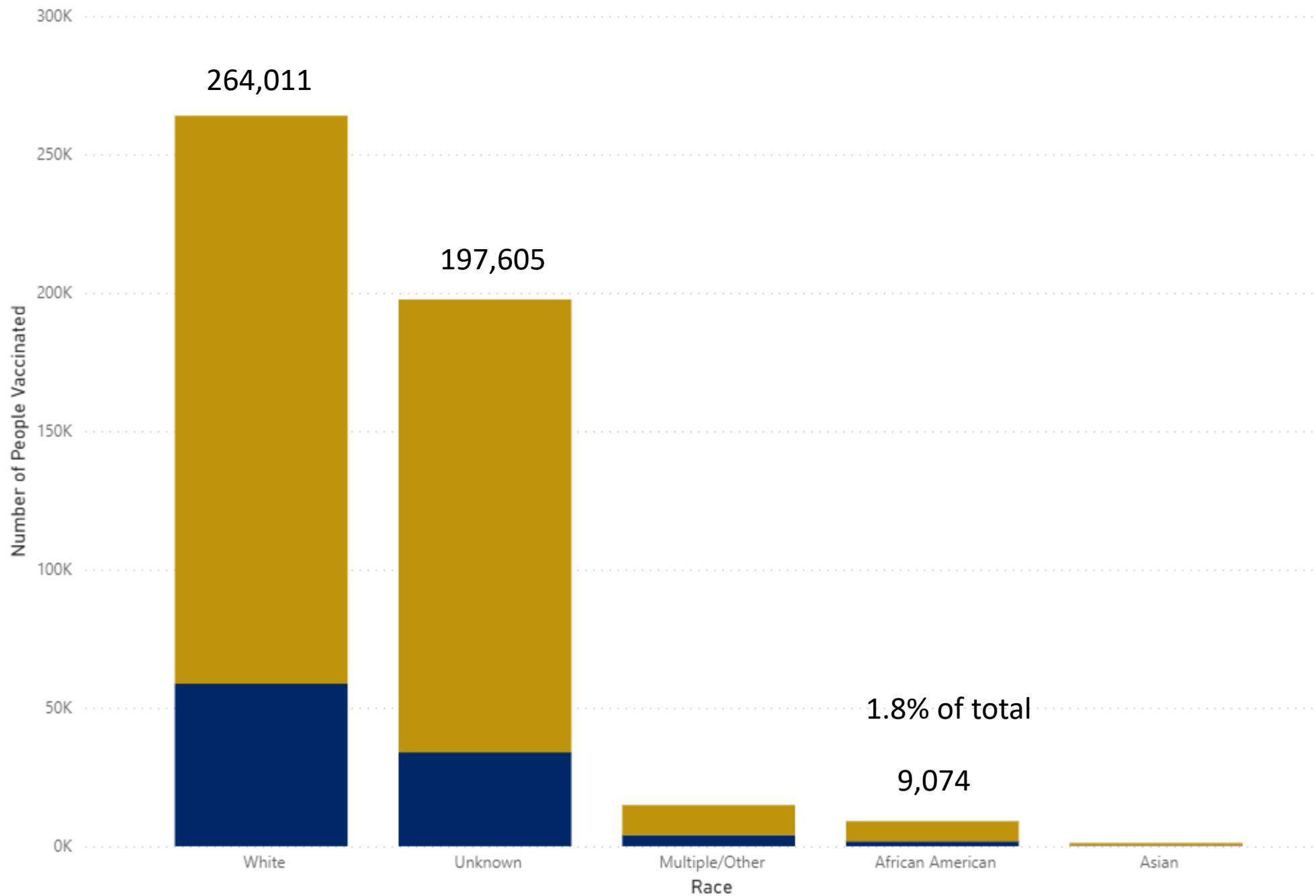
Phase 1A

- Health care personnel including, but not limited to:
 - Emergency medical service personnel
 - Nurses
 - Nursing assistants
 - Physicians
 - Dentists
 - Dental hygienists
 - Chiropractors
 - Therapists
 - Phlebotomists
 - Pharmacists
 - Technicians
 - Pharmacy technicians
 - Health professions students and trainees
 - Direct support professionals
 - Clinical personnel in school settings or correctional facilities
 - Contractual HCP not directly employed by the health care facility
- Persons not directly involved in patient care but potentially exposed to infectious material that can transmit disease among or from health care personnel and patients
 - Persons ages 65 and older
 - Persons ages 16-64 with high-risk conditions:
 - Cancer
 - Chronic kidney disease
 - COPD
 - Down Syndrome
 - Heart conditions, such as heart failure, coronary artery disease, or cardiomyopathies
 - Immunocompromised state (weakened immune system) from solid organ transplant or from blood or bone marrow transplant, immune deficiencies, HIV, use of corticosteroids, or use of other immune weakening medicines
 - Obesity (body mass index [BMI] of 30 kg/m² or higher but < 40 kg/m²)
 - Severe Obesity (BMI ≥ 40 kg/m²)
 - Pregnancy
 - Sickle cell disease
 - Smoking
 - Type 2 diabetes mellitus

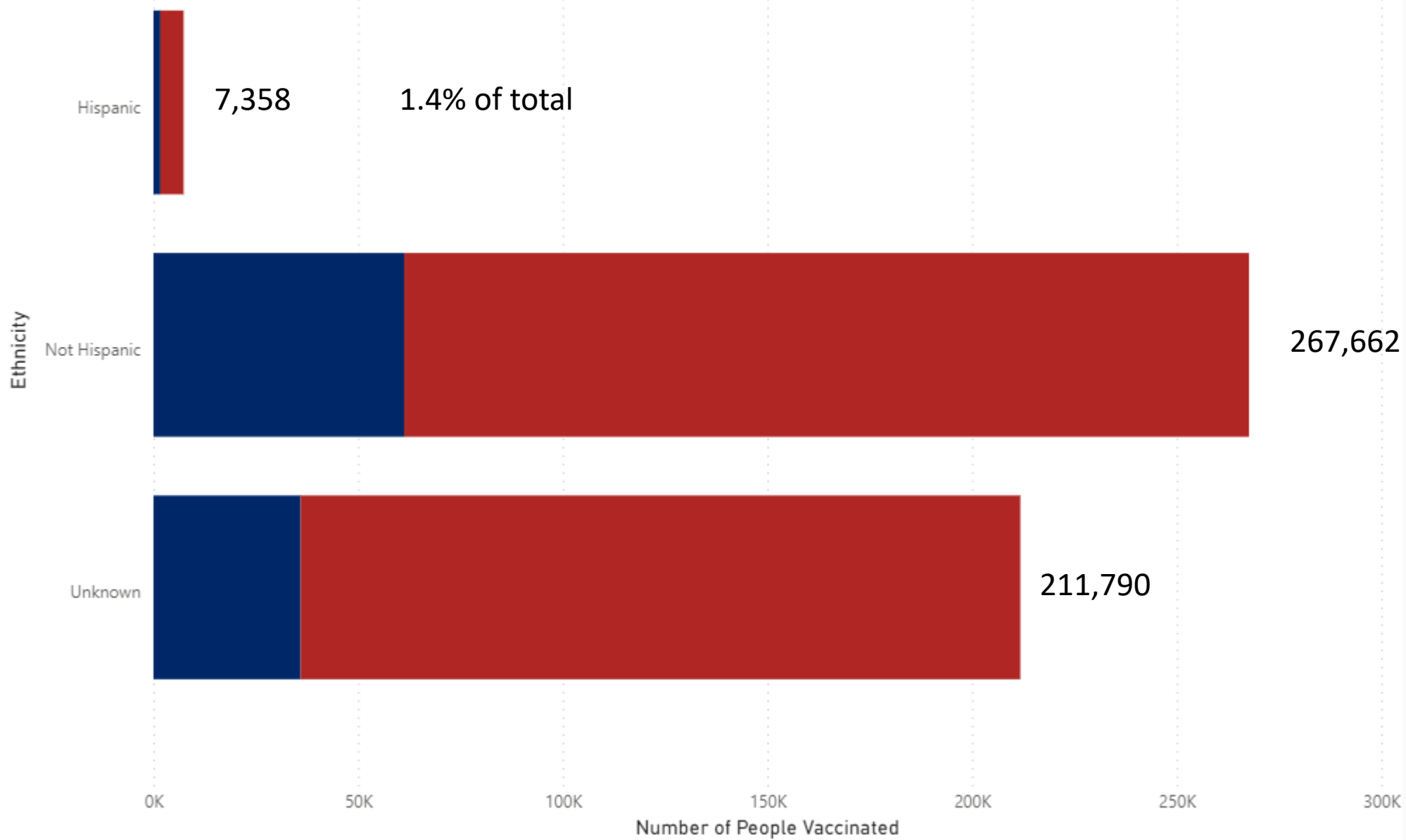
How has Pennsylvania tried to promote equity through vaccine distribution?

- Broad definition of “health care personnel,” not solely focused on clinicians but also other staff in health care settings.
- Expanding to those with underlying medical conditions will promote equity, as those with underlying medical conditions tend to have lower SES, higher racial and ethnic minorities
- Frontline essential workers more likely to be racial and ethnic minorities
- Focus on underserved communities for mass vaccination clinics

● Fully Covered ● Partially Covered



● Fully Covered ● Partially Covered



Biden Administration Vaccination Plan

Mount a safe, effective, equitable vaccination campaign

KEY ACTIONS

- Ensure the availability of safe, effective vaccines for the American public
- Accelerate getting shots into arms and get vaccines to the communities that need them most
- Create as many venues as needed for people to be vaccinated
- Focus on hard-to-reach and high-risk populations
- Fairly compensate providers, and states and local governments for the cost of administering vaccinations.
- Drive equity throughout the vaccination campaign and broader pandemic response
- Launch a national vaccinations public education campaign
- Bolster data systems and transparency for vaccinations
- Monitor vaccine safety and efficacy
- Surge the health care workforce to support the vaccination effort

Challenges remain

- No foresight as to how many vaccines Pennsylvania can expect and when from the federal government.
- Not enough vaccines.
- Increasing vaccine throughput.
- Improving equitable distribution of vaccine.