



Report-out on **Poverty** in **Philadelphia**

Anjali Chainani, Ph.D.

Director of Policy | Office of the Mayor
October 2019



City of
Philadelphia



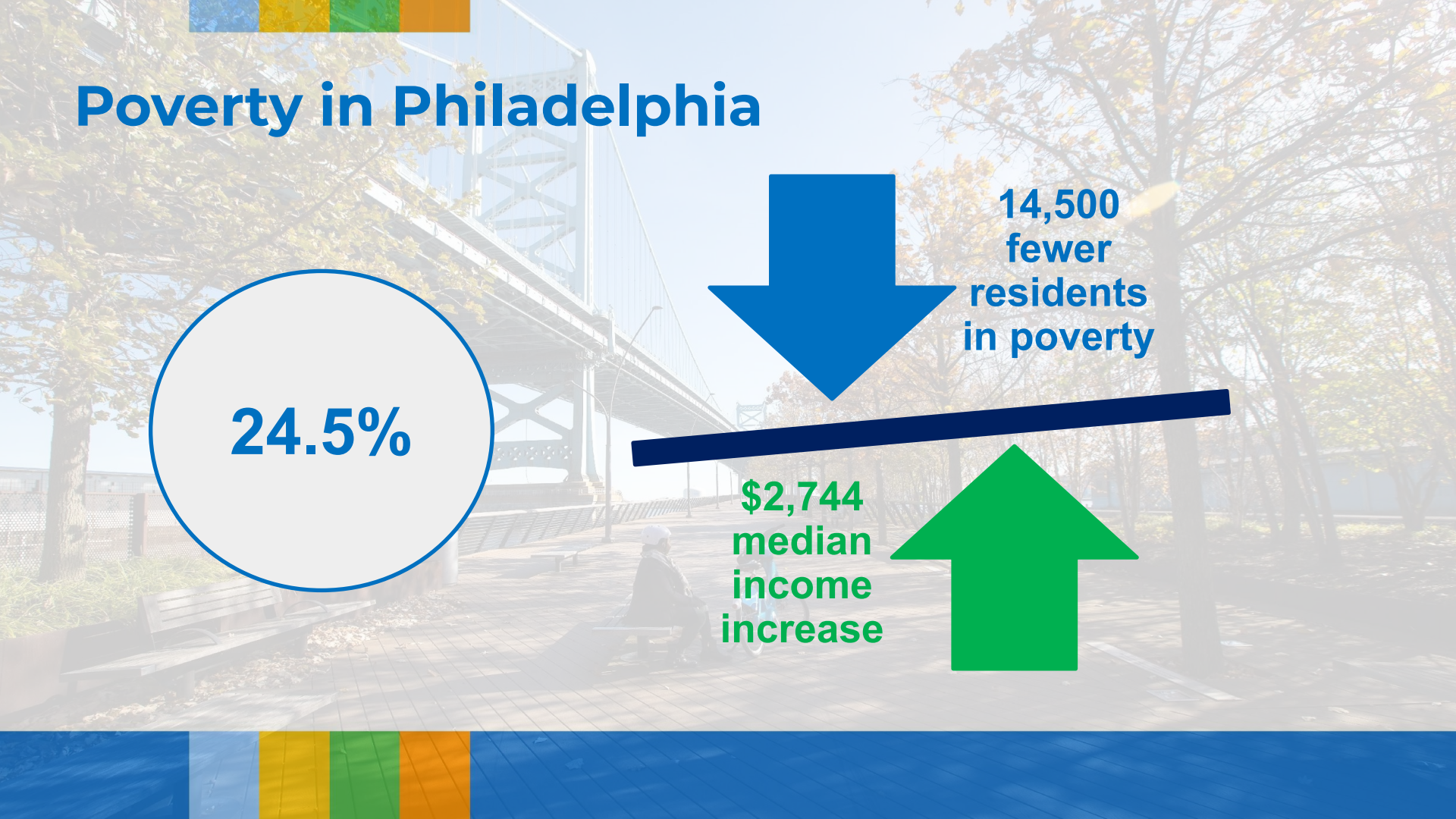
@GovLabPHL

Poverty in Philadelphia

24.5%

14,500
fewer
residents
in poverty

\$2,744
median
income
increase





Our Approach

Immediate Action to **Stabilize** Philadelphians
Who Need Support Now

\$4M Shallow Rent Subsidies

500 new beds + 405 households served through
Homeless Services and Rapid Re-Housing

\$20M BenePhilly and Benefits Access

\$80M Housing Trust Fund

Our Approach



Actions to **Increase Incomes** to Life
Philadelphians Out of Poverty

Increasing minimum wage to
\$15/hour for City employees and
contractors & state advocacy

152 Construction Apprenticeships

Affordable, accessible community
college

Our Approach



Key **Investments in Future Generations** of Philadelphians

PHL PreK

Community Schools

Criminal Justice Reform



Our **Call to Action**

Amplify the voices of those with lived experience

Evidence based approach to economic mobility

Working across all sectors