

Rebuild Year One

Project Phase:

Mayor
James Kenney
Councilwoman
Cindy Bass



PHILADELPHIA
PARKS &
RECREATION

Jerome Brown Playground

Improvements Coming Soon
Project made possible by the Philadelphia Beverage Tax.



Rebuild
PHILADELPHIA

Learn more at Rebuild.Phila.Gov

#RebuildPHL

Rebuild at a Glance



Rebuild is investing hundreds of millions of dollars



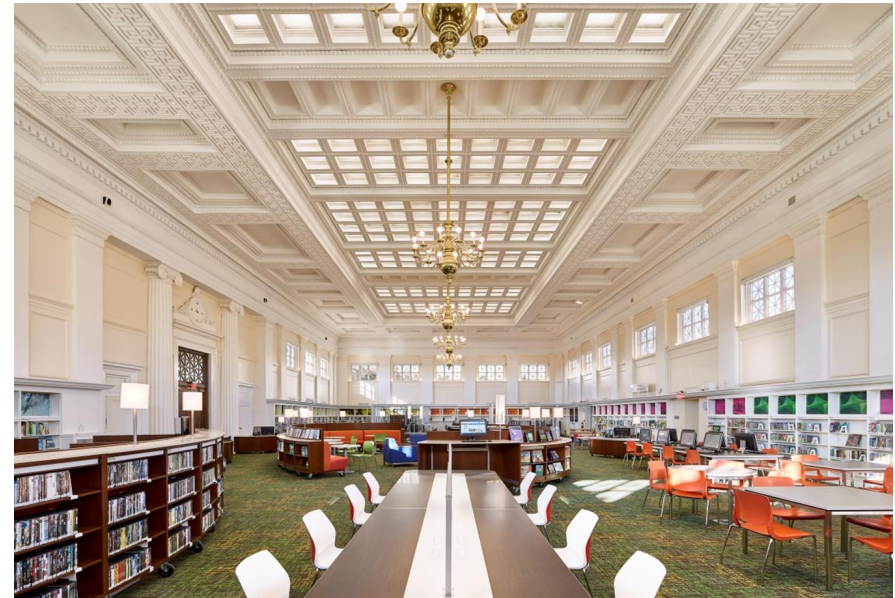
>400 potential sites



~90% of sites need investment



Expected to touch <30% of sites



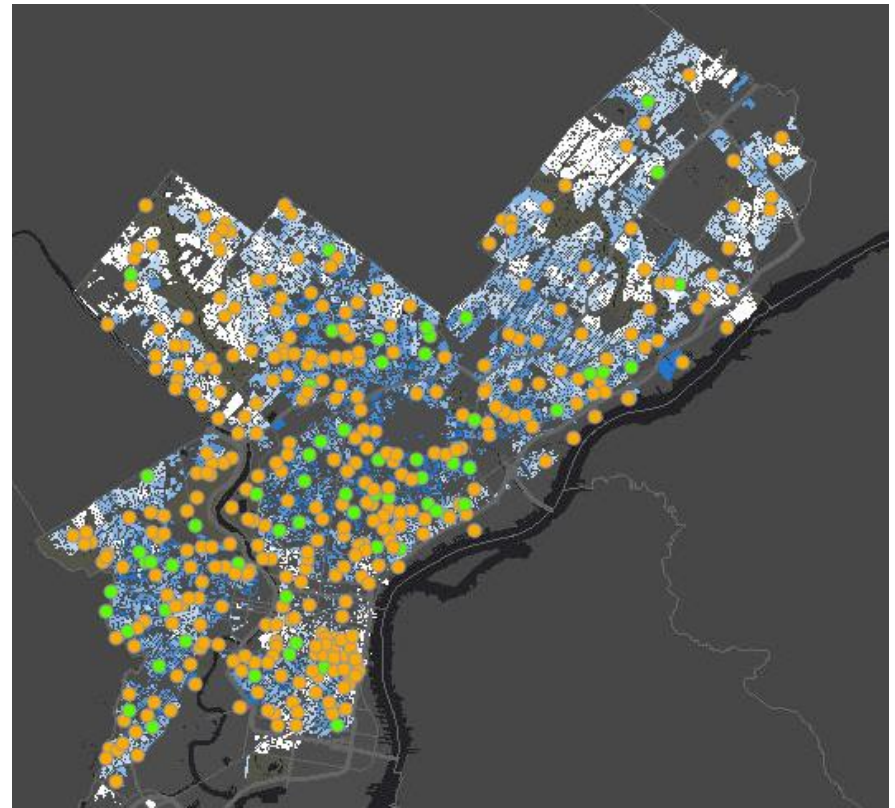
Fixing A Distressed System




Where are we investing?

72 facilities approved by Council in November 2018

- 2/3 in neighborhoods with “high need”
- 7 Co-located (e.g., Park + Lib.)
- 5 Libraries
- 23 Playgrounds
- 7 Parks
- 19 Recreation Centers



Rebuild.phila.gov/rebuild-map



Engagement, Design & Construction



OVERALL SITE



PLAYGROUND AREA



FITNESS CIRCUIT



SPRAYGROUND



Miles Mack Recreation Center Playground Renovations
 Final Improvements Plan
 July 9, 2019

LANGAN
 1818 Market Street, Suite 3300
 Philadelphia, PA 19103
 Phone: 215.845.8900

Miles Mack Playground rendering



Workforce Development



Gifford Playground, under construction

Supporting Small, Diverse Businesses



Fishtown Hockey Rink, roof under construction



Hayes Playground, under construction

Year 1 Accomplishments

\$86.5M issued in bonds in Nov. 2018, made possible by the Bev. Tax

61 facilities with work underway (engagement, design, or construction)

Over 70 local businesses enrolled in Rebuild's programs supporting small diverse businesses

16 diverse Philadelphians accepted into Rebuild's workforce programs



Anlsa Harris, Union Trainee

Goals for Today

- Learn about the successes and challenges of Rebuild's collaborative approach
- Hear about Rebuild's progress and the impact
- Have a discussion about the role of philanthropy in collaborative initiatives



Examples of Rebuild Funders

Revitalizing Community Spaces (also creates work for businesses and workforce participants)

| | |
|-------------------------------------------------------|--------------------------|
| New playground or play equipment | \$50k to \$600k |
| New fields (e.g. full field, mini soccer pitch, etc.) | \$ 50k to \$1.5M+ |
| Full Rec Center or Library Renovation | \$2M to \$14M+ |
| Community engagement efforts | Investments of all sizes |

Creating Workforce Opportunities

| | |
|----------------------------------------------------------|------------------------|
| Wages for paid on the job training and experience | \$40k per participant |
| Expand training and wraparound supports for participants | \$10k per cohort of 15 |

Strengthening Small, Diverse Businesses

| | |
|--------------------------------------------------------|-------------------------------------|
| Technical assistance and training for small businesses | \$4k per business, \$80k per cohort |
| Grants or loans for small businesses | Investments of all sizes |