

# **Philly Counts 2020 Action Fund**

Progress Report  
February 2020



# Table of Contents

Philly Counts 2020 Overview	2
Cost of an Undercount	3
Complete Count Committee	4
Community Engagement Strategy	5
Philly Counts 2020 Action Fund Overview	6
Philly Counts 2020 Action Fund Grantees	7
Philly Counts 2020 Action Fund Reach	12
Grantee Spotlights	13
Funders	18
Sponsorship	19
Get Involved	20

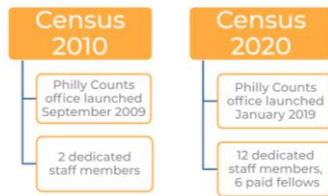


# Philly Counts 2020

On January 30, 2019, Mayor Kenney announced by Executive Order the creation of the Philly Counts 2020 Office within the Office of the Managing Director and the formation of the City of Philadelphia's Complete Count Committee.

Due to the increased challenges leading up to the 2020 Census, Mayor Kenney invested significantly more staff than prior Census preparation efforts.

## City of Philadelphia 2010 vs. 2020



Now a full-time staff of 12, with 6 paid fellows, the Philly Counts office is built on three pillars - supporting the Complete Count Committee, increasing capacity and funding through the Philly Counts 2020 Action Fund, and building engagement throughout the city.

## 2020 Census: New Challenges

The 2020 Census comes with unprecedented new challenges: historically low trust in government, drastically reduced outreach funding, a delayed communications plan from the U.S. Census Bureau and concerns over privacy and data security.

Philly Counts' goal is to build a city-wide coalition of community leaders, organizers and organizations to build trust and awareness among all Philadelphians to ensure a complete and accurate count of the 2020 Census.

# Cost of an Undercount

Even a 1% drop in the count from the last Census would result in the loss of millions of dollars to our City annually, mostly affecting essential public services. These federal dollars are essential so we can continue to support the basic needs and human rights of everyone in Philadelphia. If the Census count is inaccurate, the most vulnerable populations of our City will face the greatest hardships as a result.

## PA Funding Derived from Census Data

### 55 Large Federal Spending Programs Guided by Decennial Census Data (FY16)

Medical Assistance Program (Medicaid)	\$17,035,666,000	Federal Transit - Capital Investment Grants	\$255,903,604	Home Investment Partnerships Program	\$61,971,119
Federal Direct Student Loans	\$5,232,355,537	Low Income Home Energy Assistance (LIHEAP)	\$203,485,100	Block Grants for the Prevention and Treatment of Substance Abuse	\$59,100,201
Medicare Suppl. Medical Insurance (Part B)	\$2,744,751,997	Supplemental Nutrition Program for Women, Infants, and Children (WIC)	\$202,895,000	Water and Waste Disposal Systems for Rural Communities	\$54,938,900
Supplemental Nutrition Assistance Program (SNAP)	\$2,729,024,683	Title IV-E Foster Care	\$165,566,842	Career and Technical Education - Basic Grants to States	\$40,722,778
Highway Planning and Construction	\$1,967,464,015	New Markets Tax Credit	\$150,902,471	State Community Development Block Grant	\$37,464,741
Federal Pell Grant Program	\$840,800,000	Vocational Rehabilitation Grants to the States	\$144,407,083	Workforce Innovation and Opportunity Act (WIOA) Dislocated Worker Grants	\$37,223,657
Temporary Assistance for Needy Families (TANF)	\$719,499,305	Unemployment Insurance Administration	\$135,940,000	Community Facilities Loans / Grants	\$34,837,940
Very Low to Moderate Income Housing Loans	\$610,322,282	Community Development Block Grants / Entitlement Grants	\$132,117,621	Rural Rental Assistance Payments	\$33,889,200
Section 8 Housing Choice Vouchers	\$609,804,000	Adoption Assistance	\$120,664,274	Special Programs for the Aging, Title III, Part C, Nutrition Services	\$31,087,029
Title I Grants to Local Educational Agencies	\$567,812,540	Public Housing Capital Fund	\$119,163,000	Homeland Security Grant Program	\$30,994,986
Federal Transit Formula Grants	\$524,110,000	Health Care Centers	\$116,277,037	Community Services Block Grant	\$30,532,767
Special Education Grants	\$436,302,376	Child Care Mandatory and Matching Funds	\$115,576,000	Workforce Innovation and Opportunity Act (WIOA) Youth Activities	\$29,627,611
Section 8 Housing Assistance Payments Program	\$429,812,058	Child and Adult Care Food Program	\$113,446,000	Workforce Innovation and Opportunity Act (WIOA) Adult Activities	\$29,235,262
National School Lunch Program	\$369,272,000	School Breakfast Program	\$110,896,000	Employment Service / Wagner-Peyser	\$27,298,958
State Children's Health Insurance Program (CHIP)	\$365,076,000	Supporting Effective Instruction State Grants	\$91,965,059	Business and Industry Loans	\$26,410,000
Low Income Housing Tax Credit	\$343,843,308	Crime Victim Assistance	\$86,776,184	Rural Electrification Loans and Loan Guarantees	\$18,000,000
Head Start	\$298,934,211	Child Care and Development Block Grant	\$80,442,000	Cooperative Extension Service	\$17,167,885
Public and Indian Housing	\$283,543,000	Social Services Block Grant	\$63,184,601	Native American Employment & Training	\$856,953

**Total Funding for FY16: \$39,179,047,733**

## The Philadelphia Inquirer

OPINION

**The stakes are huge in Philly and Pa. if we don't get the census right | Editorial**

Updated: June 21, 2019 - 5:18 AM



The Inquirer Editorial Board | [opinion@inquirer.com](mailto:opinion@inquirer.com)

The heat of the battle over the addition of a question about citizenship status on the census might overshadow the importance of the 2020 count for the city and to Pennsylvania -- but it shouldn't. The constitutionally mandated count of every person in the country every 10 years is the basis for the breakdown of the Electoral College, the House of Representatives, and voting districts. It is also used to decide how \$875 billion in federal funds each year are allocated among the states.



# Complete Count Committee

Mayor Kenney's Complete Count Committee is comprised of 19 working subcommittees chaired by trusted community leaders, as well as six elected honorary co-chairs.

## Chair, Mayor James F. Kenney

<i>Honorary Co-Chair</i>	<b>Councilmember Derek Green</b> , Philadelphia City Council
<i>Honorary Co-Chair</i>	<b>Representative Brendan Boyle</b> , United States Congress
<i>Honorary Co-Chair</i>	<b>Representative Dwight Evans</b> , United States Congress
<i>Honorary Co-Chair</i>	<b>Representative Mary Gay Scanlon</b> , United States Congress
<i>Honorary Co-Chair</i>	<b>Representative Jason Dawkins</b> , PA House of Representatives
<i>Honorary Co-Chair</i>	<b>Senator Christine Tartaglione</b> , PA Senate
Aging Chair	<b>Lydia Hernandez Velez</b> , Mayor's Commission on Aging
African American Chair	<b>Rev. Alyn Waller</b> , Enon Tabernacle Baptist Church
African and Caribbean Chair	<b>Voffee Jabateh</b> , ACANA
Asian American Chair	<b>Nancy Dung Nguyen</b> , VietLead
Census Jobs Chair	<b>H. Patrick Clancy</b> , Philadelphia Works
Civic Engagement Chair	<b>Erin Casey</b> , Pennsylvania Voice
Corporate and Philanthropy	<b>Daniel J. Hilferty</b> , Independence Blue Cross
Corporate and Philanthropy	<b>Sidney Hargro</b> , Philanthropy Network
Children and Youth Chair	<b>Dr. William Hite</b> , School District of Philadelphia
Immigrant and LEP Chair	<b>Will Gonzalez</b> , Ceiba
Interfaith Chair	<b>Rev. Dr. Lorina Marshall-Blake</b> , Vine Memorial Baptist Church
Labor Chair	<b>Patrick Eiding</b> , Philadelphia Council AFL-CIO
Latino Chair	<b>Rev. Bonnie Camarda</b> , Salvation Army
LGBTQ+ Chair	<b>Greg DeShields</b> , PHL Diversity
Municipal Chair	<b>Brian Abernathy</b> , City of Philadelphia Office of the Managing Director
Nonprofit, Community and Civic Chair	<b>Maria Gonzalez</b> , HACE CDC
People with Disabilities Chair	<b>Thomas Earle</b> , Liberty Resources, Inc.
Public Housing	<b>Kelvin Jeremiah</b> , Philadelphia Housing Authority

# Community Engagement Strategy



In addition to supporting the Complete Count Committee, Philly Counts is executing a strategy to train a volunteer corps of Census Champions.

Census Champions are trusted messengers who complete a 90-minute training to equip them with the knowledge to share with their neighbors, family and friends why the Census is so critically important and share how to participate.

On September 17<sup>th</sup>, Constitution Day, Philly Counts launched the Census Champion program, training over 2,200 Champions at 71 trainings across the City in 8 different languages.

To date, Philly Counts has trained over 6,000 Census Champions throughout the City.



# Philly Counts 2020 Action Fund

The Philly Counts 2020 Action Fund is a partnership born out of the Corporate and Philanthropy Subcommittee of the Mayor's Complete Count Committee. The Fund was created to replace a federal grant opportunity that provided \$554,000 to community organizations in 2010 and was eliminated from the 2020 Census Bureau budget.

The Action Fund is a partnership between the **City of Philadelphia**, **Philanthropy Network Greater Philadelphia**, and the **United Way of Greater Philadelphia and Southern New Jersey**.

The goals of the Action Fund are to:

- Increase communication and coordination of work around Census 2020
- Achieve effective, efficient strategies and increased philanthropic investments
- Support education, community outreach, regional communications, policy advocacy and other "Get Out the Count" activities
- Prioritize funding in hard-to-count communities, referring to hard to locate, hard to contact, hard to persuade and hard to interview populations.

Over 5 Rapid Response Funding Cycles, non-profit organizations apply for grants ranging from \$2,500 to \$25,000. To date, four of five rounds have been completed, with over 89 projects funded.

Round	Application Round Closes	Recommendations Sent to Review Committee	Applicants Notified
1	August 30 <sup>th</sup> , 2019	September 3 <sup>rd</sup> , 2019	September 6 <sup>th</sup> , 2019
2	September 18 <sup>th</sup> , 2019	September 27 <sup>th</sup> , 2019	October 4 <sup>th</sup> , 2019
3	October 16 <sup>th</sup> , 2019	October 25 <sup>th</sup> , 2019	November 7 <sup>th</sup> , 2019
4	December 17 <sup>th</sup> , 2019	December 20 <sup>th</sup> , 2019	January 13 <sup>th</sup> , 2020
5	February 24 <sup>th</sup> , 2020	March 4 <sup>th</sup> , 2020	March 11 <sup>th</sup> , 2020

Thanks to the United Way of Greater Philadelphia and Southern New Jersey, the first \$400,000 in donations to the Action Fund are matched dollar for dollar.



# Philly Counts 2020 Action Fund Grantees

We are proud to have funded **88** projects across **83** trusted community organizations throughout Philadelphia to help us ensure a complete and accurate count. Below are our grantees who are working on the ground in our hardest to count communities.

Organization	Grant
<b>Round 1: August 1 - August 30, 2019</b>	
Asian American United	\$10,000
Generations on Line	\$10,000
Lancaster Avenue 21st Century Business Assn. CDC	\$5,100
Mayfair BID	\$6,000
SEAMAAC, Inc.	\$25,000
Yiri	\$3,000
<b>Subtotal Round 1 (n=6)</b>	<b>\$59,100</b>
<b>Round 2: August 31 - September 18, 2019</b>	
ACHIEVEability	\$10,000
Asian American Senior Association of PA	\$3,000
Asian Arts Initiative	\$10,000
CAIR - Philadelphia	\$8,300
Ceiba	\$10,000
Council of Indian Organizations in Greater Philadelphia	\$3,500
First Person Arts	\$10,000

Germantown United CDC	\$7,300
HACE	\$10,000
Hispanic Chamber of Commerce	\$5,000
Liberty Resource Inc	\$10,000
Lutheran Settlement House	\$10,000
Masjid Ar Rahman	\$5,000
Philadelphia Chinatown Dev Corp	\$25,000
Philadlephia Mural Arts Advocates	\$6,880
SELF	\$10,000
Urban League of Philadelphia	\$25,000
VietLead	\$10,000

<b>Subtotal Round II (n=18)</b>	<b>\$178,980</b>
---------------------------------	------------------

**Round 3: September 19 – October 16, 2019**

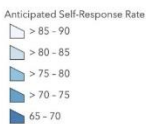
African Cultural Alliance of North America, Inc	\$7,500
Arab-American Development Corps	\$10,000
Blackwell Culture Alliance Inc	\$10,000
Emprendedores,Inc	\$10,000
Foundation Moukhadimatoul Khidma	\$9,600
Guidimakha inc	\$7,000
Indochinese American Council	\$10,000
Instituto Dominicano Duarteano Del Valle Delaware, Inc.	\$2,500
Ivorians of Delaware Valley	\$7,500
Just Act	\$9,500

Korean American Assoc. of Greater Philadelphia (KAAGP)	\$9,721
Lancaster Avenue 21 <sup>st</sup> Century Business Association CDC	\$6,000
New World Association of Emigrants from Eastern Europe	\$9,750
People's Emergency Center	\$10,000
Providence Center	\$10,000
SALONEFC	\$7,500
Southwest Community Development Corporation	\$10,000
Supportive Older Women's Network	\$5,000
The Equity Project	\$10,000
UAC/ Martin Luther King Jr. Day	\$25,000
<b>Subtotal Round III (n=20)</b>	<b>\$186,571</b>
<b>Round IV: October 17 - December 11, 2019</b>	
African American History & Culture Association Inc	\$7,500
Antigua and Barbuda Association of Pennsylvania	\$7,500
Asian Americans United (Round 2 Grantee)	\$10,000
Asian Arts Initiative (Round 2 Grantee)	\$10,000
Asociacion de Cosmetologas de Pennsylvania	\$500
Bebashi - Transition to Hope	\$10,000
Cameroonian Association of Philadelphia	\$7,500
Casa de Venezuela INC	\$3,500

Center in the Park	\$4,500
Community Learning Center	\$10,000
Dominican Parade and Festival of Philadelphia	\$7,000
East Passyunk Community Center Advisory Council	\$3,000
Entrepreneur Works Fund	\$7,500
Ethiopian Community Association of Greater Phila.	\$8,000
Fairhill Neighbors	\$3,000
Garden of Eden Recovery Mission	\$10,000
Generations On Line (Round 1 grantee)	\$10,000
Greater Philadelphia Asian Social Services Center	\$5,000
Hispanic Clergy of Philadelphia and Vicinity	\$7,500
Hunting Park Community Revitalization Corp	\$7,500
Institute for the Development of African-American Youth, Inc	\$10,000
Kiths Integrated and Targeted Human Services	\$5,500
Make the Road PA	\$10,000
Nationalities Service Center	\$5,000
New Kensington CDC	\$10,000
Northeast Philadelphia Development Corporation	\$5,000
Nueva Esperanza, Inc	\$7,500
One Day at a Time, Inc	\$10,000
Penn Asian Senior Services	\$6,500
Pennsylvania Health Access Network	\$10,000

Philadelphia Corporation for Aging	\$9,000
Philip Jaisohn Memorial Foundation	\$5,000
Project HOME	\$10,000
Puentes de Salud	\$10,000
Quardu-Gboni Mandingo Association	\$1,500
South Kensington Community Partners	\$7,345
Temple University	\$5,000
The Educational Advocates Reaching Today's Hardworking Students, Inc.	\$6,000
The Equity Project (Round 3 Grantee)	\$10,000
The Frator Heru Institute, Inc	\$10,000
The Philadelphia Education Fund	\$5,000
The Sudanese American Community of Greater PHL	\$7,500
Working Families Partnership Philadelphia and Vicinity	\$10,000
Yiri (Round I Grantee)	\$2,000
<b>Subtotal Round IV (n= 45)</b>	<b>\$313,845</b>
<b>Total All Rounds \$738,496</b>	

The Action Fund seeks to fund organizations that have established trust in the areas of our City that have been historically undercounted. Below is a map of the headquarters of the organizations we have funded to date overlaid with our predicted response rates for the 2020 Census:



## Grantee Spotlight: *Global Citizen 365*

King Day of Service at Girard College has been an annual tradition in Philadelphia for 25 years and is the largest MLK Day of Service in the country, with over 5,000 participants at Girard College and 150,000 throughout the City. The leadership at Global Citizen 365 applied for a grant from the Philly Counts 2020 Action Fund to make their signature project highlight census awareness and participation.



Elected officials and community members came together for a press conference promoting census awareness and then got to work creating Commit-to-Count boxes, which will be placed in libraries and community centers throughout the City. These will collect Commit-to-Count Cards, which will be mailed back to participants prior to the Census, reminding them of their pledge.

Participants at King Day of Service also wrote 2,000 postcards to households in the City's most historically undercounted Census Tracts, explaining how the census affects communities, and explaining how and when to complete the survey.



## Grantee Spotlight:

### *Masjid Al Rahman*

Since 2012, Masjid Al Rahman has aimed to provide a safe and welcoming space where believers can gather and grow in their faith. They have a strong reach with young Muslim men and women of color from low-income backgrounds in South West Philadelphia.

With their grant funding, leaders at the Masjid plan to train members of their community to become Census Champions, purchase equipment like tablets and laptops to help facilitate census completion, and provide hotspots for folks in their community to use to fill out the census. Leading up to Census Action Days, they'll run a census campaign on social media and facilitate door to door mapping of the area they're serving.





## Grantee Spotlight:

### ***ACHIEVEability***

For decades, ACHIEVEability has strived to permanently break the generational cycle of poverty for low income, single parent, and homeless families.

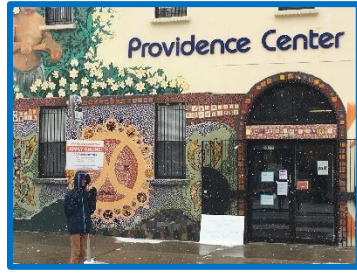
ACHIEVability is one of the only community-based organizations serving the Haddington neighborhood in West Philly, a neighborhood at risk of an undercount. It is well-positioned to reach residents, and staff understand the risk-factors in their community and know that labor intensive door-to-door outreach is necessary to increase the count.

ACHIEVEability is engaging historically hard to count residents in Haddington through organized volunteer canvassing with Community Connectors. Community Connectors are a group of 8 to 10 resident volunteers and staff that will conduct door-to-door outreach and leave materials at each residence and provide community resource information.

The organization will dedicate their March town hall to census education and outreach. Through their social media channels and monthly newsletter, the organization will promote the Census and encourage participation. Staff at their facilities will work with individuals to complete the census on their own devices, over the phone, in their free computer lab or paper survey form.



## Grantee Spotlight: *Providence Center*



Our partners at the Providence Center have been developing strategies to engage the youth they serve around census outreach. After Philly Counts hosted a bilingual Census Champion Training specifically tailored to young people at the Center, Charito Morales, the organization's Community Organizer, developed activities that further prep kids with information and empower them to accurately discuss the census with their peers, family and community members.

Providence Center works with a large population of Latinx residents and immigrants in the Kensington and Fairhill Section of North Philadelphia, both of which are historically undercounted groups.

Charito recognizes that many students come from families that will be first-time census participants, and that kids are the best trusted messengers in their families and communities, able to relay accurate information about why the census matters and how it works.

Morales emphasizes the impact that a complete count will have on youth in Philadelphia for the next 10 years, particularly on education and essential programs like healthcare.

The Providence Center is excited to use a portion of their Action Fund grant to fund a performance project planned for the spring, in which its youth will engage people across the city through bilingual census outreach efforts.

## Grantee Spotlight:

### *Asociacion de Cosmetologas*

Philly Counts is excited to partner with Asociacion de Cosmetologas de Pennsylvania in our efforts to ensure that historically undercounted groups are accurately represented in the census.

Most members of the recently formed nonprofit -- created to unite Latinx cosmetologists across the City -- own beauty salons across the Greater Philadelphia Area which serve predominantly Latinx clients.

Philly Counts is intentional about reaching people where they are and working through trusted messengers to spread awareness about the census at the community level. Recognizing the need for targeted efforts to connect specifically with the Latinx and immigrant populations, 30 members of Asociacion de Cosmetologas de Pennsylvania completed a Philly Counts Census Champion Training, and now possess the knowledge and tools to relay the importance of the census to their communities.

The Asociacion plans to use its Action Fund grant from round IV to purchase iPads, which they'll each encourage clients to use to browse Philly Counts' census outreach materials in English and Spanish.



# Funders

## CENSUS CHAMPIONS

\$100,000+



**Bank**

United Way  
of Greater Philadelphia  
and Southern New Jersey



## FRIENDS OF A FAIR COUNT

\$50,000 - \$99,999



## COMPLETE COUNT SPONSORS

\$25,000 - \$49,999



## COMMUNITY CONTRIBUTORS

\$1,000 - \$24,999

Asbestos Workers  
AFSCME Local 1637  
AFSCME Local 2187  
AFSCME DC 47  
Asian Bank  
Carol Haas Gravagno  
Chamber of Commerce  
CHOP  
Elevators Union Local 3  
CWA Local 13000

Kind Family Foundation  
Lenfest Foundation  
PFT Local 3  
Plumbing & Pipe Fitting Local 690  
Richard Phillips  
Roofers Local 30  
Sandy & Steve Sheller  
Sprinkler Fitters 692  
TWU Local 234  
Unite HERE 274

Wawa

# Sponsorship

## Direct Fund Sponsorship

<b>Census Champion</b>	<b>\$100,000+</b>
<b>Friend of a Fair Count</b>	<b>\$50,000 - \$99,999</b>
<b>Complete Count Sponsor</b>	<b>\$25,000 - \$49,999</b>
<b>Community Contributor</b>	<b>\$1,000 - \$24,999</b>

## In-Kind Contributions

- **Printing**
- **Advertising Space**
- **Employee Marketing Campaign**
- **Technology**
- **Meeting and Organizing Space**

Please note, should you decide to contribute, your contribution neither advantages nor disadvantages you from pursuing contracting opportunities or in obtaining services or other benefits from the City of Philadelphia. We expect that contributions to support Philly Counts 2020 Action Fund are for a public purpose and are made without the expectation of private benefit or concern about adverse effect as a result. In addition, please note that City law requires transparency of solicitations made by a City official or employee to current or prospective City professional services contractors, recipients of financial assistance or principal contractors or subcontractors for best value contracts. Therefore, if you seek or already have either a professional services contract or a best value contract with the City, or seek or already receive financial assistance from the City, and in the prior two years any City officer or employee directly solicited you or a representative of your organization for your contribution, you must disclose the name and title of the soliciting City officer or employee, the date of the request, the amount/nature of the request, whether/when the request was fulfilled, and the amount/nature of your response (e.g., amount of contribution). For more detailed information on the City's disclosure/eligibility requirements, including mandatory deadlines for filing disclosures, please refer to <https://secure.phila.gov/econtract/>.

## Get Involved

### *Community Action Days*

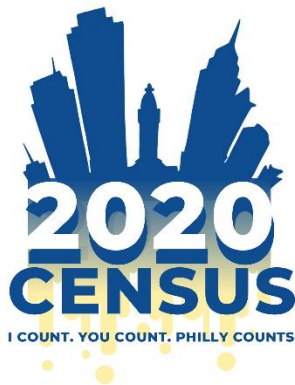
We need your help canvassing Census Action Days across the city on March 21, March 28 and April 4 from 10 a.m. to 1 p.m. With your help, we will be placing door hangers on over 200,000 homes in Philadelphia. Door hanger canvases are FUN, EASY and an effective way to increase awareness of the importance of the census. All volunteers will canvas with a partner and be trained upon their arrival. Let us know you are interested by signing up below!

**Saturday, March 21, 2020**

**Saturday, March 28, 2020**

**Saturday, April 1, 2020**

Register Here: [Bit.ly/CensusActionVol](https://bit.ly/CensusActionVol)



*If you have any questions or concerns, please reach out to your Philly Counts point of contact or you can call or email our office: [census@phila.gov](mailto:census@phila.gov) and 215-686-0888.*

## Get Involved

### *Census Day Celebration in LOVE Park*

Wednesday, April 1, 2020

12:00 PM – 2:00 PM



*Save the Date!*

**WEDNESDAY, APRIL 1ST**  
**is Census Day 2020!**

Join Mayor Kenney and special guests for  
a **CENSUS DAY CELEBRATION** in  
**LOVE Park**  
**12 PM - 2 PM**

All are welcome at this public event.

**JOIN THE PARTY!**

RSVP at <http://bit.ly/CensusDay>



**Philly Counts**

the 1990s, the number of people in the UK with a mental health problem has increased by 50% (Mental Health Foundation 2000). The prevalence of mental health problems in the UK is estimated to be 10% (Mental Health Foundation 2000).

There is a growing recognition that people with mental health problems are at risk of discrimination and social exclusion (Mental Health Foundation 2000). This is reflected in the UK government's commitment to the rights of people with mental health problems in the Human Rights Act 1998.

The purpose of this paper is to explore the experiences of people with mental health problems who are at risk of discrimination and social exclusion. The paper is based on a qualitative study of the experiences of people with mental health problems who are at risk of discrimination and social exclusion.

The study was conducted in the UK and involved 10 participants. The participants were recruited through a range of sources, including mental health services, community groups, and the media.

The study was conducted over a period of 12 months. The data were collected through a series of interviews and focus groups. The data were analysed using a grounded theory approach.

The findings of the study suggest that people with mental health problems who are at risk of discrimination and social exclusion experience a range of difficulties. These difficulties include difficulties with employment, housing, and social relationships.

The study also suggests that people with mental health problems who are at risk of discrimination and social exclusion experience a range of emotions. These emotions include feelings of isolation, loneliness, and despair.

The study has implications for policy and practice. It suggests that there is a need to develop interventions that address the needs of people with mental health problems who are at risk of discrimination and social exclusion.

The study also suggests that there is a need to develop interventions that address the emotional needs of people with mental health problems who are at risk of discrimination and social exclusion.

The study was funded by the UK government. The study was conducted in accordance with the principles of good research practice.

The study was approved by the local research ethics committee. The study was conducted in accordance with the principles of good research practice.

The study was conducted in accordance with the principles of good research practice. The study was conducted in accordance with the principles of good research practice.

The study was conducted in accordance with the principles of good research practice. The study was conducted in accordance with the principles of good research practice.

The study was conducted in accordance with the principles of good research practice. The study was conducted in accordance with the principles of good research practice.

The study was conducted in accordance with the principles of good research practice. The study was conducted in accordance with the principles of good research practice.

The study was conducted in accordance with the principles of good research practice. The study was conducted in accordance with the principles of good research practice.

The study was conducted in accordance with the principles of good research practice. The study was conducted in accordance with the principles of good research practice.

The study was conducted in accordance with the principles of good research practice. The study was conducted in accordance with the principles of good research practice.

The study was conducted in accordance with the principles of good research practice. The study was conducted in accordance with the principles of good research practice.