



United Way
of Chester County



Social Innovation Lab

Kelly Cockshaw

Director of Leadership and Innovation



SOCIAL INNOVATION

- The process of developing and implementing creative solutions to address social challenges.



SOCIAL INNOVATION LAB



MISSION: Nurture transformative new ways of approaching complex problems to bring about meaningful change in Chester County.



SOCIAL INNOVATION LAB



Innovate for Impact

AI for Impact



SOCIAL INNOVATION LAB



Innovate for Impact

Insight for Impact



SOCIAL INNOVATION LAB



Innovate for Impact

Inspire for Impact



SOCIAL INNOVATION LAB



Innovate for Impact

Lead for Impact



AI for Impact

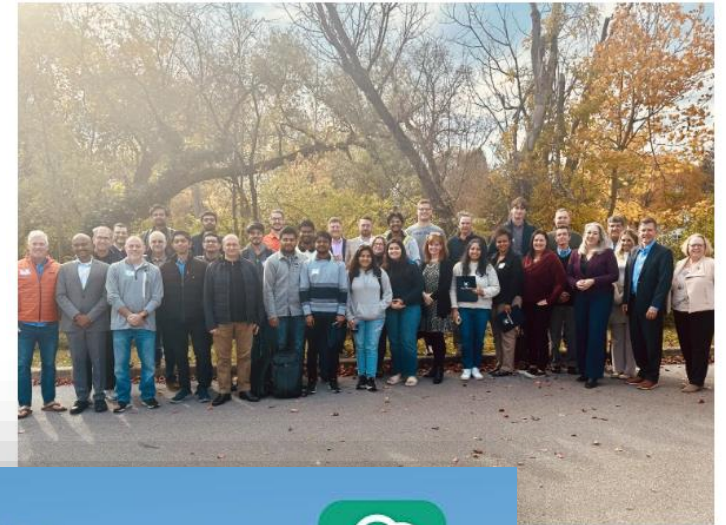
- Designed to equip nonprofit organizations in Chester County with the essential skills and knowledge needed to harness the power of artificial intelligence for social good.
- Through hands-on training sessions and collaborative partnerships between nonprofits and AI experts, this initiative empowers organizations to effectively utilize AI technologies.



AI for Impact

- AI Workshop - Chester County nonprofits, industry leaders and Penn State students & faculty
- ChatGPT Made Simple for Nonprofit Success

Chester County nonprofits explore 'AI for Impact' with Nittany AI Alliance



AI FOR IMPACT:
ChatGPT Made Simple for Nonprofit Success



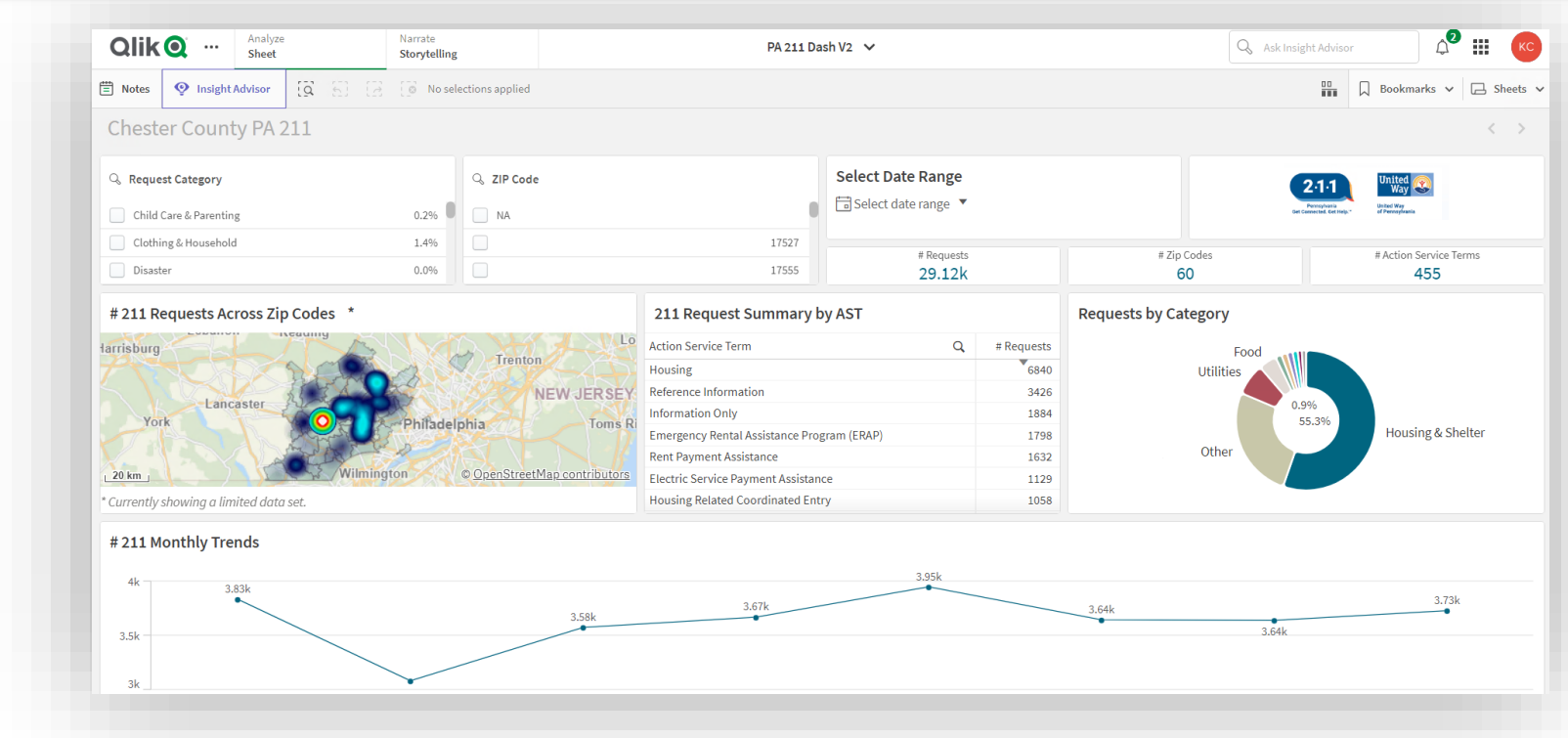


Insight for Impact

- **With the right insights, nonprofits can navigate challenges effectively, optimize their programs, and make a lasting impact on the communities they serve.**
- **Leveraging a myriad of Chester County data sources to craft an insightful “Chester County Dashboard” and revolutionizing how we understand and serve our community.**



Insight for Impact



- In partnership with Qlik and Penn State Great Valley's Data & Analytics Capstone Program
- Additional project with TD Bank's "Mindpower" program



Inspire for Impact

- **Workshops, training sessions, and mentorship programs, providing nonprofits with the resources they need to thrive.**



Lead for Impact - Leadership Chester County

- Established in 2002
- Leadership is key to driving change and fostering innovation



EXPERT-LED TOPICS

teaches nonprofit governance,
social problem solving and
leadership



LEADERSHIP DEVELOPMENT

benefits workplace
interactions and the
community at large



BOARD PLACEMENT SERVICE

matches the skills of graduates
with the needs of local agencies